

**DISCLOSURES UNDER BASEL III CAPITAL REGULATIONS (CONSOLIDATED)
FOR THE HALF YEAR ENDED 30TH SEPTEMBER 2015**

I. SCOPE OF APPLICATION AND CAPITAL ADEQUACY

Name of the head of the banking group to which the framework applies: Axis Bank Limited

Axis Bank Limited (the 'Bank') is a commercial bank, which was incorporated on the 3rd December 1993. The Bank is the controlling entity for all group entities. The consolidated financial statements of the Bank comprise the financial statements of Axis Bank Limited and its subsidiaries (including step-down subsidiaries) that together constitute the 'Group'. The Bank consolidates its subsidiaries in accordance with Accounting Standard 21 (AS-21) 'Consolidated Financial Statements' issued by the Institute of Chartered Accountants of India on a line-by-line basis by adding together the like items of assets, liabilities, income and expenditure.

(i) Qualitative Disclosures

The list of group entities considered for consolidation is given below:

Name of the Entity/Country of Incorporation	Included under Accounting Scope of Consolidation	Method of Consolidation	Included under Regulatory Scope of Consolidation	Method of Consolidation	Reasons for difference in the Method of Consolidation	Reasons, if Consolidated under only one of the Scopes of Consolidation
Axis Asset Management Company Limited/India	Yes	Consolidated in accordance with AS-21- Consolidated Financial Statements	Yes	Consolidated in accordance with AS-21- Consolidated Financial Statements	NA	NA
Axis Bank UK Limited/UK	Yes	Consolidated in accordance with AS-21- Consolidated Financial Statements	Yes	Consolidated in accordance with AS-21- Consolidated Financial Statements	NA	NA
Axis Capital Limited/India	Yes	Consolidated in accordance with AS-21- Consolidated Financial Statements	Yes	Consolidated in accordance with AS-21- Consolidated Financial Statements	NA	NA
Axis Finance Limited/India	Yes	Consolidated in accordance with AS-21- Consolidated Financial Statements	Yes	Consolidated in accordance with AS-21- Consolidated Financial Statements	NA	NA
Axis Mutual Fund Trustee Limited/India	Yes	Consolidated in accordance with AS-21- Consolidated Financial Statements	Yes	Consolidated in accordance with AS-21- Consolidated Financial Statements	NA	NA

Name of the Entity/Country of Incorporation	Included under Accounting Scope of Consolidation	Method of Consolidation	Included under Regulatory Scope of Consolidation	Method of Consolidation	Reasons for difference in the Method of Consolidation	Reasons, if Consolidated under only one of the Scopes of Consolidation
Axis Private Equity Limited/India	Yes	Consolidated in accordance with AS-21-Consolidated Financial Statements	Yes	Consolidated in accordance with AS-21-Consolidated Financial Statements	NA	NA
Axis Securities Limited/India	Yes	Consolidated in accordance with AS-21-Consolidated Financial Statements	Yes	Consolidated in accordance with AS-21-Consolidated Financial Statements	NA	NA
Axis Trustee Services Limited/India	Yes	Consolidated in accordance with AS-21-Consolidated Financial Statements	Yes	Consolidated in accordance with AS-21-Consolidated Financial Statements	NA	NA
Axis Securities Europe Limited/UK	Yes	Consolidated in accordance with AS-21-Consolidated Financial Statements	Yes	Consolidated in accordance with AS-21-Consolidated Financial Statements	NA	NA

* NA – Not Applicable

There are no group entities that are not considered for consolidation under both the accounting scope of consolidation and regulatory scope of consolidation.

(ii) Quantitative Disclosures

The list of group entities considered for consolidation as on 30th September 2015 is given below:

(Amt. in millions)				
Name of the Entity/Country of Incorporation	Principal Activity of the Entity	Total Balance Sheet Equity*	Total Balance Sheet Assets	
Axis Asset Management Company Limited/India	Asset Management company for Axis Mutual Fund	₹2,101	₹3,073	
Axis Bank UK Limited/UK	Retail Banking, Corporate Banking, Commercial Banking and Treasury Services	₹3,607 (USD 55)	₹29,305 (USD 447)	
Axis Capital Limited/India	Merchant Banking, Institutional Broking and Investment Banking Business	₹735	₹5,243	
Axis Finance Limited/India	Non-Banking Financial activities	₹3,183	₹29,679	
Axis Mutual Fund Trustee Limited/India	Trustee company for Axis Mutual Fund	₹1	₹2	
Axis Private Equity Limited/India	Managing investments, venture capital funds and off-shore funds	₹15	₹49	
Axis Securities Limited/India	Marketing of Retail Asset Products, Credit Cards and Retail Broking	₹1,445	₹3,225	

(Amt. in millions)

Name of the Entity/Country of Incorporation	Principal Activity of the Entity	Total Balance Sheet Equity*	Total Balance Sheet Assets
Axis Trustee Services Limited/India	Trusteeship services	₹15	₹533
Axis Securities Europe Limited/UK	To advise and arranging deals in investments.	₹101 (GBP 1)	₹186 (GBP 2)

* Paid up Equity Capital

Note -

There is no capital deficiency in any subsidiary, which is not included in the regulatory scope of consolidation.

As on 30th September 2015, the Bank does not have controlling interest in any insurance entity.

There are no restrictions or impediments on transfer of funds or regulatory capital within the banking group.

II. CAPITAL ADEQUACY

The Bank is subject to the capital adequacy guidelines stipulated by RBI, which are based on the framework of the Basel Committee on Banking Supervision. As per Basel III guidelines, the Bank is required to maintain a minimum Capital to Risk Weighted Assets Ratio (CRAR) of 9% {11.5% including Capital Conservation Buffer (CCB)}, with minimum Common Equity Tier I (CET1) of 5.5% (8% including CCB) as on 31st March 2019. These guidelines on Basel III have been implemented on 1st April 2013 in a phased manner. The minimum capital required to be maintained by the Bank for the half year ended 30th September 2015 is 9% with minimum Common Equity Tier 1 (CET1) of 5.5%.

An assessment of the capital requirement of the Bank is carried out through a comprehensive projection of future businesses that takes cognizance of the strategic intent of the Bank, profitability of particular businesses and opportunities for growth. The proper mapping of credit, operational and market risks to this projected business growth enables assignment of capital that not only adequately covers the minimum regulatory capital requirement but also provides headroom for growth. The calibration of risk to business is enabled by a strong risk culture in the Bank aided by appropriate, technology-based risk management systems. As part of the Internal Capital Adequacy Assessment Process (ICAAP), the Bank also assesses the adequacy of capital under stress. A summary of the Bank's capital requirement for credit, market and operational risk and the capital adequacy ratio as on 30th September 2015 is presented below:

(₹ in millions)

Capital Requirements for various Risks	Amount
CREDIT RISK	
Capital requirements for Credit Risk	
- Portfolios subject to standardised approach	280,956
- Securitisation exposures	-
MARKET RISK	
Capital requirements for Market Risk	
- Standardised duration approach	28,555
- Interest rate risk	25,490
- Foreign exchange risk (including gold)	789
- Equity risk	2,276
OPERATIONAL RISK	
Capital requirements for Operational risk	
- Basic indicator approach	32,874

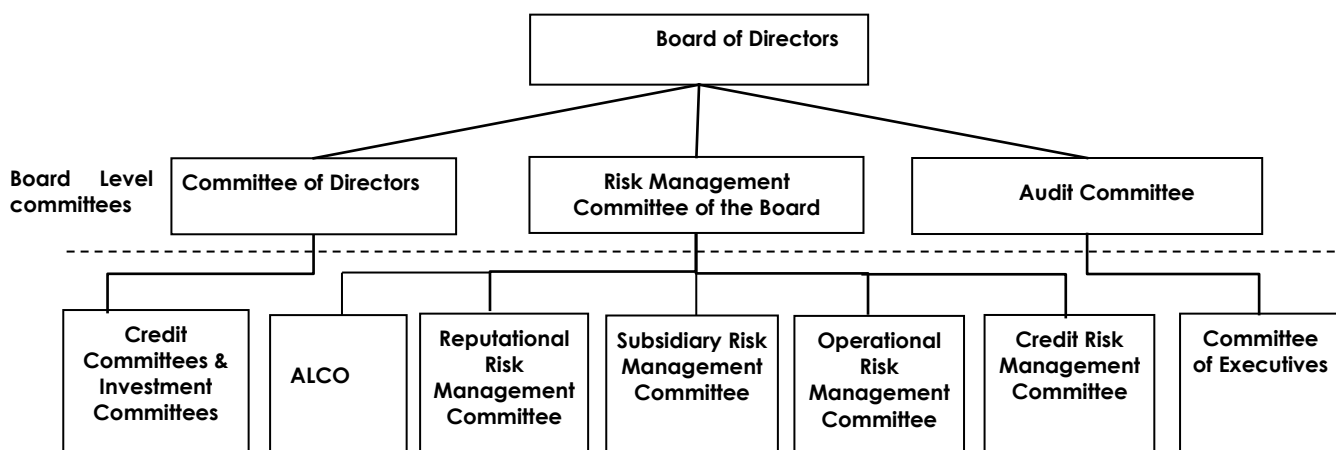
Capital Adequacy Ratios	Consolidated	Standalone
Common Equity Tier – 1 CRAR	11.27%	11.16%
Tier – 1 CRAR	11.27%	11.16%
Total CRAR	14.52%	14.37%

III. RISK MANAGEMENT: OBJECTIVES AND ORGANISATION STRUCTURE

The wide variety of businesses undertaken by the Bank requires it to identify, measure, control, monitor and report risks effectively. The key components of the Bank's risk management rely on the risk governance architecture, comprehensive processes and internal control mechanism based on approved policies and guidelines. The Bank's risk governance architecture focuses on the key areas of risk such as credit, market (including liquidity) and operational risk and quantification of these risks, wherever possible, for effective and continuous monitoring and control.

Objectives and Policies

The Bank's risk management processes are guided by well-defined policies appropriate for various risk categories, independent risk oversight and periodic monitoring through the sub-committees of the Board of Directors. The Board sets the overall risk appetite and philosophy for the Bank. The Committee of Directors, the Risk Management Committee and the Audit Committee of the Board, which are sub-committees of the Board, review various aspects of risk arising from the businesses of the Bank. Various senior management committees operate within the broad policy framework as illustrated below:



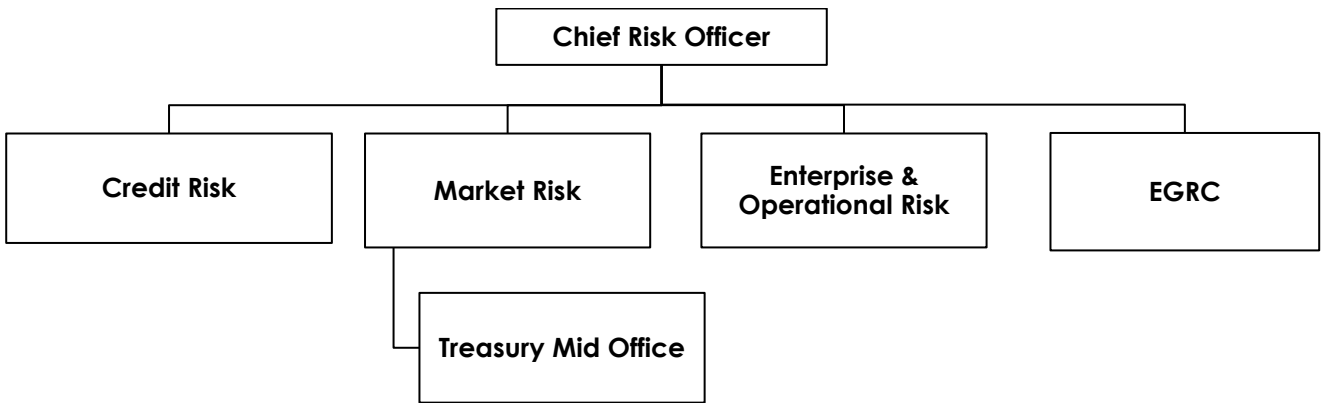
The Bank has put in place policies relating to management of credit risk, market risk, operational risk, reputation risk, subsidiary risk and asset-liability both for the domestic as well as overseas operations along with overseas subsidiaries as per the respective host regulatory requirements and business needs. The overseas policies are drawn based on the risk perceptions of these economies and the Bank's risk appetite.

The Bank has formulated a comprehensive Stress Testing Policy to measure impact of adverse stress scenarios on the adequacy of capital. The stress scenarios are idiosyncratic, market wide and a combination of both.

Structure and Organisation

The Chief Risk Officer reports to the Managing Director and CEO and the Risk Management Committee of the Board oversees the functioning of the Department. The Department has four separate teams for Credit Risk, Market Risk (including Treasury Mid Office), Enterprise and

Operational Risk and Enterprise Governance Risk and Compliance (EGRC) and the head of each team reports to the Chief Risk Officer.



IV. CREDIT RISK

Credit risk refers to the deterioration in the credit quality of the borrower or the counter-party adversely impacting the financial performance of the Bank. The losses incurred by the Bank in a credit transaction could be due to inability or wilful default of the borrower in honouring the financial commitments to the Bank. The Bank is exposed to credit risk through lending and capital market activities.

Credit Risk Management Policy

The Board of Directors establishes parameters for risk appetite which are defined through strategic businesses plan as well as the Corporate Credit Policy. Credit Risk Management Policy lays down the roles and responsibilities, risk appetite, key processes and reporting framework. Corporate credit is managed through rating of borrowers and the transaction, thorough due diligence through an appraisal process alongside risk vetting of individual exposures at origination and thorough periodic review (including portfolio review) after sanctioning. Retail credit to individuals and small business is managed through definition of product criteria, appropriate credit filters and subsequent portfolio monitoring.

Credit Rating System

The foundation of credit risk management rests on the internal rating system. Rating linked single borrower exposure norms, delegation of powers and review frequency have been adopted by the Bank. The Bank has developed rating tools specific to market segments such as large and mid-corporates, SME, financial companies, microfinance companies and project finance to objectively assess underlying risk associated with such exposures.

The credit rating model uses a combination of quantitative and qualitative inputs to arrive at a 'point-in-time' view of the risk profile of counterparty. Each internal rating grade corresponds to a distinct probability of default over one year. Expert scorecards are used for various SME schematic products and retail agriculture schemes. Statistical application and behavioural scorecards have been developed for all major retail portfolios.

The Bank recognises cash, central/state government, bank and corporate guarantees, exclusive mortgage of properties and lease rental securitisation for the purpose of credit enhancement to arrive at a facility rating.

Model validation is carried out annually by objectively assessing the discriminatory power, calibration accuracy and stability of ratings. The Bank has completed the estimation and validation of PD, LGD and CCF models for corporate and retail portfolios.

Credit Sanction and Related Processes

The guiding principles behind the credit sanction process are as under :

- 'Know Your Customer' is a leading principle for all activities.
- The acceptability of credit exposure is primarily based on the sustainability and adequacy of borrower's normal business operations and not based solely on the availability of security.

The Bank has put in place a hierarchical committee structure based on the size and rating of the exposures for credit sanction and review; with sanctioning authority rested with higher level committees for larger and lesser rated exposures. Committee of Directors (COD) is the topmost committee in the hierarchy which is a sub-committee of the Board.

All management level sanctioning committees require mandatory presence of a representative from Risk Department for quorum.

Review and Monitoring

- All credit exposures, once approved, are monitored and reviewed periodically against the approved limits. Borrowers with lower credit rating are subject to more frequent reviews.
- Credit audit involves independent review of credit risk assessment, compliance with internal policies of the Bank and with the regulatory framework, compliance of sanction terms and conditions and effectiveness of loan administration.
- Customers with emerging credit problems are identified early and classified accordingly. Remedial action is initiated promptly to minimize the potential loss to the Bank.

Concentration Risk

The Bank manages concentration risk by means of appropriate structural limits and borrower-wise limits based on credit-worthiness. Credit concentration in the Bank's portfolios is monitored for the following:

- Large exposures to the individual clients or group: The Bank has individual borrower-wise exposure ceilings based on the internal rating of the borrower as well as group-wise borrowing limits which are continuously tracked and monitored.
- Geographic concentration for real estate exposures.
- Concentration of unsecured loans to total loans and advances.
- Concentration by Industry: Industry analysis plays an important part in assessing the concentration risk within the loan portfolio. Industries are classified into various categories based on factors such as demand-supply, input related risks, government policy stance towards the sector and financial strength of the sector in general. Such categorization is used in determining the expansion strategy for the particular industry.

Portfolio Management

Portfolio level risk analytics and reporting to senior management examines optimal spread of risk across various rating classes, undue risk concentration across any particular industry segments and delinquencies. Borrowers or portfolios are marked for early warning when signs of weakness or financial deterioration are envisaged in order that timely remedial actions may be initiated. In-depth sector specific studies are undertaken on portfolios vulnerable to extraneous shocks and the results are shared with the business departments. The Bank has a well-defined stress testing policy in place and at least on a quarterly basis, stress testing is undertaken on various portfolios to gauge the impact of stress situations on the health of portfolio, profitability and capital adequacy.

Retail lending portfolio is the blended mix of Consumer lending and Retail Rural lending portfolios. Secured products (like mortgage, wheels business) still commands a major share of the consumer lending portfolio, with prudent underwriting for unsecured lending (personal loans and credit card business) continuing during the current year. The Bank has developed a robust risk management framework at each stage of retail loan cycle i.e. loan acquisition, underwriting and collections.

Underwriting strategy relies on extensive usage of analytical scoring models which also takes inputs from bureau. The Bank uses 'Rules Engine' which helps customise business rules thereby aiding in faster decision making without compromising on the underlying risks. Senior Management takes note of movement and direction of risk reported through information published on structured dashboards.

Definitions and Classification of Non-Performing Assets

Advances are classified into performing and non-performing asset (NPAs) as per RBI guidelines.

A non-performing asset (NPA) is a loan or an advance where;

- interest and/or installment of principal remains overdue for a period of more than 90 days in respect of a term loan,
- the account remains 'out-of-order' for a period of more than 90 days in respect of an Overdraft or Cash Credit (OD/CC),
- the bill remains overdue for a period of more than 90 days in case of bills purchased and discounted,
- a loan granted for short duration crops will be treated as an NPA if the installments of principal or interest thereon remain overdue for two crop seasons,
- a loan granted for long duration crops will be treated as an NPA if the installments of principal or interest thereon remain overdue for one crop season,
- in respect of derivative transactions, the overdue receivables representing positive mark-to-market value of a derivative contract, if these remain unpaid for a period of 90 days from the specified due date for payment.
- the amount of liquidity facility remains outstanding for more than 90 days, in respect of a securitisation transaction undertaken in terms of guidelines on securitisation dated February 1, 2006.

NPAs are further classified into sub-standard, doubtful and loss assets based on the criteria stipulated by RBI. A sub-standard asset is one, which has remained a NPA for a period less than or equal to 12 months. An asset is classified as doubtful if it has remained in the sub-standard category for more than 12 months. A loss asset is one where loss has been identified by the Bank or internal or external auditors or during RBI inspection but the amount has not been written off fully.

Definition of Impairment

At each balance sheet date, the Bank ascertains if there is any impairment in its assets. If such impairment is detected, the Bank estimates the recoverable amount of the asset. If the recoverable amount of the asset or the cash-generating unit to which the asset belongs is less than its carrying amount, the carrying amount is reduced to its recoverable amount. The reduction is treated as an impairment loss and is recognised in the profit and loss account.

CREDIT RISK EXPOSURES

Total Gross Credit Risk Exposure Including Geographic Distribution of Exposure – Position as on 30th September 2015

(₹ in millions)

	Domestic (Outstanding)	Overseas (Outstanding)	Total
Fund Based	3,786,439	546,017	4,332,456
Non Fund Based *	892,361	134,579	1,026,940
Total	4,678,800	680,596	5,359,396

* Non-fund based exposures are bank guarantees issued on behalf of constituents and acceptances and endorsements.

Distribution of Credit Risk Exposure by Industry Sector – Position as on 30th September 2015

(₹ in millions)

Industry Classification	Amount	
	Fund Based (Outstanding)	Non-Fund Based (Outstanding)
Banking and Finance	355,867	132,898
Beverage and Tobacco	6,412	9,326
Cement and Cement Products	30,007	6,079
Chemicals and Chemical products	92,253	87,729
- of which Petro Chemicals	5,462	51,250
- of which Drugs and Pharmaceuticals	47,406	6,593
Commercial Real Estate	130,121	22,478
Computer Software	20,384	20,689
Construction	26,153	35,862
Cotton Textiles	47,594	3,083
Edible Oils and Vanaspati	5,738	14,982
Engineering	74,332	136,972
- of which Electronics	5,797	1,226
Entertainment & Media	13,989	11,536
Food Processing	66,549	2,818
Gems and Jewellery	18,489	1,904
Glass and Glassware	3,488	3,083
Infrastructure (excluding Power)	242,819	154,268
- of which Roads and Ports	93,293	13,753
- of which Telecommunications	30,876	47,930
Iron and Steel	101,140	30,630
Jute Textiles	227	15
Leather and Leather Products	1,579	104
Metal and Metal Products	77,232	29,935
Mining and Quarrying (incl. Coal)	33,369	2,841
NBFCs	41,105	13,332
Other Textiles	20,488	3,025
Paper and Paper Products	19,618	6,288
Petroleum, Coal Products and Nuclear Fuels	14,839	29,767
Power Generation & Distribution	178,897	66,809
Professional Services	52,363	4,052
Rubber, Plastic and their Products	18,153	3,098

(₹ in millions)

Industry Classification	Amount	
	Fund Based (Outstanding)	Non-Fund Based (Outstanding)
Shipping Transportation & Logistics	38,193	3,961
Sugar	7,549	4,103
Tea	7,810	681
Trade	149,201	77,704
Vehicles, Vehicle Parts and Transport Equipments	28,656	5,684
Wood and Wood Products	2,914	1,330
Other Industries	161,759	47,174
Residual Exposures	2,243,169	52,700
- of which Other Assets	129,932	-
- of which Banking Book Investments	684,444	-
- of which Retail, Agriculture & Others	1,428,793	52,700
Total	4,332,456	1,026,940

As on 30th September 2015, the Bank's exposure to the industries stated below was more than 5% of the total gross credit exposure (outstanding):

Sr. No.	Industry Classification	Percentage of the total gross credit exposure
1.	Banking & Finance	9%
2.	Infrastructure	7%

Residual Contractual Maturity Breakdown of Assets – Position as on 30th September 2015*

(₹ in millions)

Maturity Bucket	Cash	Balances with RBI	Balances with other banks#	Investments	Advances	Fixed Assets	Other assets
1 day	29,230	14,137	97,181	108,893	36,468	-	2,782
2 to 7 days	-	3,220	2,219	43,409	25,724	-	13,022
8 to 14 days	-	3,182	2,970	27,508	20,330	-	13,553
15 to 28 days	-	3,737	1,681	31,025	30,573	-	44,991
29 days to 3 months	-	10,936	4,017	82,722	123,296	-	12,085
Over 3 months and upto 6 months	-	10,257	17,270	78,603	200,145	29	34,590
Over 6 months and upto 12 months	-	17,378	8,968	134,349	199,478	-	31,091
Over 1 year and upto 3 years	-	21,185	3,341	169,540	630,361	6	23,932
Over 3 years and upto 5 years	-	6,911	-	76,718	370,427	-	31,802
Over 5 years	-	47,812	-	399,636	1,384,801	26,273	84,772
Total	29,230	138,755	137,647	1,152,403	3,021,603	26,308	292,620

* Intra-group adjustments are excluded

including money at call and short notice

Movement of NPAs and Provision for NPAs (including NPIs) – Position as on 30th September 2015

		(₹ in millions)
	Particulars	Amount
A.	Amount of NPAs (Gross)*	44,511
	- Substandard	10,300
	- Doubtful 1	12,885
	- Doubtful 2	7,624
	- Doubtful 3	372
	- Loss	13,330
B.	Net NPAs	15,436
C.	NPA Ratios	
	- Gross NPAs (including NPIs) to gross advances (%)	1.46%
	- Net NPAs (including NPIs) to net advances (%)	0.51%
D.	Movement of NPAs (Gross)	
	- Opening balance as on 1 st April 2015	41,102
	- Additions [#]	37,890
	- Reductions	(34,481)
	- Closing balance as on 30 th September 2015	44,511

* includes ₹ 119 Million outstanding under application money classified as non-performing asset.

[#] includes ₹ 95 Million due to effect of exchange rate fluctuation.

Movement of Specific & General Provision – Position as on 30th September 2015

		(₹ in millions)	
	Movement of Provisions	Specific Provisions	General Provisions
	- Opening balance as on 1 st April 2015	30,358	17,347
	- Provision made in 2015-16 [#]	15,254	780
	- Write-offs	(14,697)	-
	- Write-back of excess provision	(576)	-
	- Closing balance as on 30 th September 2015	30,338	18,127

[#] includes effect of exchange rate fluctuation of ₹96 Million in specific provisions and ₹142 Million in general provisions.

Details of write-offs and recoveries that have been booked directly to the income statement – Position as on 30th September 2015

		(₹ in millions)
	Write-offs that have been booked directly to the income statement	116
	Recoveries that have been booked directly to the income statement	481

NPIs and Movement of Provision for Depreciation on Investments – Position as on 30th September 2015

		(₹ in millions)
		Amount
A.	Amount of Non-Performing Investments	2,903
	Amount of Non-Performing Investments - Others*	119
B.	Amount of Provision held for Non-performing investments	2,866
	Amount of Provision held for Non-performing investments - Others*	20
C.	Movement of provision for depreciation on investments	
	- Opening balance as on 1 st April 2015	723
	- Provision made in 2015-16	992
	- Write-offs/Write-back of excess provision	-
	- Closing balance as on 30 th September 2015	1,715

* represents amount outstanding under application money classified as non-performing asset.

Major Industries breakup of NPA – Position as on 30th September 2015
(₹ in millions)

Industry	Gross NPA
NPA in Top 5 Industries	12,481

Major Industries breakup of Provision – Position as on 30th September 2015
(₹ in millions)

Industry	Specific Provision	General Provision
Provision in Top 5 industries	7,754	5,286

Major Industries breakup of specific provision and write-off's during the current period – For quarter ended 30th September 2015
(₹ in millions)

Industry	Provision	Write-offs
Specific Provision in Top 5 industries	7,449	6,657

Geography wise Distribution of NPA and Provision – Position as on 30th September 2015
(₹ in millions)

Geography	Gross NPA	Specific Provision	General Provision
Domestic	41,411	28,588	15,136
Overseas	3,100	1,750	2,991
Total	44,511	30,338	18,127

Credit Risk: Use of Rating Agency under the Standardised Approach

The RBI guidelines on capital adequacy require banks to use ratings assigned by specified External Credit Assessment Agencies (ECAAs) namely Brickworks, CARE, CRISIL, ICRA, India Ratings and SMERA for domestic counterparties and Standard & Poor's, Moody's and Fitch for foreign counterparties.

The Bank is using issuer ratings and short-term and long-term instrument/bank facilities' ratings which are assigned by the accredited rating agencies viz. Brickworks, CARE, CRISIL, ICRA, India Ratings and SMERA and published in the public domain to assign risk-weights in terms of RBI guidelines. In respect of claims on non-resident corporates and foreign banks, ratings assigned by international rating agencies i.e. Standard & Poor's, Moody's and Fitch is used. For exposures with contractual maturity of less than one year, a short-term rating is used. For cash credit facilities and exposures with contractual maturity of more than one year, long-term rating is used.

Issue ratings would be used if the Bank has an exposure in the rated issue and this would include fund-based and non-fund based working capital facilities as well as loans and investments. In case the Bank does not have exposure in a rated issue, the Bank would use the issue rating for its comparable unrated exposures to the same borrower, provided that the Bank's exposures are pari-passu or senior and of similar or lesser maturity as compared to the rated issue. Structured Obligation (SO) ratings are not used unless the Bank has a direct exposure in the 'SO' rated issue. If an issuer has a long-term or short-term exposure with an external rating that warrants a risk weight of 150%, all unrated claims on the same counterparty, whether short-term or long-term, also receive 150% risk weight, unless the Bank uses recognised credit risk mitigation techniques for such claims.

Issuer ratings provide an opinion on the general credit worthiness of the rated entities in relation to their senior unsecured obligations. Therefore, issuer ratings would be directly used to assign risk-weight to unrated exposures of the same borrower.

Details of Gross Credit Risk Exposure (Fund based and Non-fund based) based on Risk-Weight – Position as on 30th September 2015
(₹ in millions)

	Amount
Below 100% risk weight	3,276,364
100% risk weight	1,387,936
More than 100% risk weight	695,096
Deduction from capital funds	-

V. CREDIT RISK MITIGATION

The Bank uses various collaterals both financial as well as non-financial, guarantees and credit insurance as credit risk mitigants. The main financial collaterals include bank deposits, National Savings Certificate / Kisan Vikas Patra / Life Insurance Policy and gold, while main non-financial collaterals include land and building, plant and machinery, residential and commercial mortgages. The guarantees include guarantees given by corporate, bank and personal guarantees. This also includes loans and advances guaranteed by Export Credit & Guarantee Corporation Limited (ECGC), Credit Guarantee Fund Trust for Small Industries (CGTSI), Central Government and State Government.

The Bank has in place a collateral management policy, which underlines the eligibility requirements for Credit Risk Mitigants (CRM) for capital computation as per Basel III guidelines. The Bank reduces its credit exposure to counterparty with the value of eligible financial collateral to take account of the risk mitigating effect of the collateral. To account for the volatility in the value of collateral, haircut is applied based on the type, issuer, maturity, rating and re-margining/revaluation frequency of the collateral. The Bank revalues various financial collaterals at varied frequency depending on the type of collateral. The Bank has a valuation policy that covers processes for collateral valuation and empanelment of valuers.

Details of Total Credit Exposure (after on or off Balance Sheet Netting) as on 30th September 2015
(₹ in millions)

	Amount
Covered by:	
- Eligible financial collaterals after application of haircuts	187,757
- Guarantees/credit derivatives	89,436

VI. SECURITISATION

The primary objectives for undertaking securitisation activity by the Bank are enhancing liquidity, optimisation of usage of capital and churning of the assets as part of risk management strategy.

The securitisation of assets generally being undertaken by the Bank is on the basis of 'True Sale', which provides 100% protection to the Bank from default. The Bank has not sponsored any special purpose vehicle which is required to be consolidated in the consolidated financial statements as per accounting norms.

The Bank may also invest in securitised instruments which offer attractive risk adjusted returns. The Bank enters into purchase/sale of corporate and retail loans through direct assignment/SPV. In most cases, post securitisation, the Bank continues to service the loans transferred to the assignee/SPV. The Bank, however, does not follow the originate to distribute model and pipeline and warehousing risk is not material to the Bank.

Valuation of securitised exposures is carried out in accordance with the Fixed Income Money Market and Derivatives Association (FIMMDA)/RBI guidelines. Gain on securitisation is recognised over the period of the underlying securities issued by the SPV. Loss on securitisation is immediately debited to profit and loss account. In respect of credit enhancements provided or recourse obligations (projected delinquencies, future servicing etc.) accepted by the Bank, appropriate provision/disclosure is made at the time of sale in accordance with AS-29 'Provisions, contingent liabilities and contingent assets'.

The Bank follows the standardized approach prescribed by the RBI for the securitisation activities. The Bank uses the ratings assigned by various external credit rating agencies viz. Brickworks, CARE, CRISIL, ICRA, India Ratings and SMERA for its securitisation exposures.

All transfers of assets under securitisation were effected on true sale basis. However, in the half year ended 30th September 2015, the Bank has not securitised any asset.

A. Banking Book

Details of Exposure Securitised by the Bank and subject to Securitisation Framework

(₹ in millions)

Sr. No.	Type of Securitisation	
I	Total amount of exposures securitised	-
ii	Losses recognised by the Bank during the current period	-
iii	Amount of assets intended to be securitised within a year	-
	Of which	-
	- Amount of assets originated within a year before securitisation	-
iv	Amount of exposures securitised	-
	- Corporate Loans	-
v	Unrecognised gain or losses on sale	-
	- Corporate Loans	-

Aggregate amount of Securitisation Exposures Retained or Purchased as on 30th September 2015 is given below

(₹ in millions)

Sr. No.	Type of Securitisation	On Balance Sheet	Off Balance Sheet
i	Retained	-	-
ii	Securities purchased	-	-
iii	Liquidity facility	-	-
iv	Credit enhancement (cash collateral)	-	-
v	Other commitments	-	-

Risk-weight wise Bucket Details of the Securitisation Exposures on the Basis of Book-Value

(₹ in millions)

	Amount	Capital charge
Below 100% risk weight	-	-
100% risk weight	-	-
More than 100% risk weight	-	-
Deductions		
- Entirely from Tier I capital	-	-
- Credit enhancing I/Os deducted from Total Capital	-	-
- Credit enhancement (cash collateral)	-	-

B. Trading Book
Details of Exposure Securitised by the Bank and subject to Securitisation Framework

(₹ in millions)

Sr. No.	Type of Securitisation	Amount
i	Aggregate amount of exposures securitised by the Bank for which the Bank has retained some exposures and which is subject to the market risk approach	-

Aggregate amount of Securitisation Exposures Retained or Purchased as on 30th September 2015 is given below

(₹ in millions)

Sr. No.	Type of Securitisation	On Balance Sheet*	Off Balance Sheet
I	Retained	-	-
ii	Securities purchased	-	-
	- Corporate Loans	-	-
	- Lease Rental	2,298	-
	- Priority Sector (auto pool & micro finance)	4,567	-
iii	Liquidity facility	-	-
iv	Credit enhancement (cash collateral)	-	-
V	Other commitments	-	-

* includes outstanding balance of PTCs purchased in earlier years also

Risk-weight wise Bucket Details of the Securitisation Exposures on the Basis of Book-Value

(₹ in millions)

		Amount	Capital charge
i	Exposures subject to Comprehensive Risk Measure for specific risk	-	-
	- Retained	-	-
	- Securities purchased	-	-
ii	Exposures subject to the securitisation framework for specific risk	-	-
	Below 100% risk weight	6,865	219
	100% risk weight	-	-
	More than 100% risk weight	-	-
iii	Deductions	-	-
	- Entirely from Tier I capital	-	-
	- Credit enhancing I/Os deducted from Total Capital	-	-
	- Credit enhancement (cash collateral)	-	-

VII. MARKET RISK IN TRADING BOOK

Market risk is the risk of loss to the Bank's earnings and capital due to changes in the market level of interest rates, price of securities, foreign exchange rates and equities' price, as well as the volatilities of those changes. The Bank is exposed to market risk through its investment activities and also trading activities, which are undertaken for customers as well as on a proprietary basis. The Bank adopts a comprehensive approach to market risk management for its trading, investment and asset/liability portfolios. For market risk management, the Bank has:

- Board approved market risk policies and guidelines which are aligned to the regulatory guidelines and based on experiences gained over the years. The policies are reviewed periodically keeping in view regulatory changes, business requirements and market developments.
- Process manual which are updated regularly to incorporate and document the best practices.
- Market risk identification through elaborate mapping of the Bank's main businesses to various market risks.
- Statistical measures like Value at Risk (VaR), supplemented by stress tests, back tests and scenario analysis.
- Non-statistical measures like position limits, marked-to-market (MTM), gaps and sensitivities (mark-to-market, position limits, duration, PVBP, option Greeks).
- Management Information System (MIS) for timely market risk reporting to senior management functionaries. Key risk metrics are presented to the Risk Management Committee of the Board through Risk Dash-Boards.

Risk limits such as position limits, stop-loss limits, alarm limits, gaps and sensitivities (duration, PVBP, option Greeks) are set up and reviewed periodically, based on a number of criteria including regulatory guidelines, relevant market analysis, business strategy, size of the investment and trading portfolio, management experience and the Bank's risk appetite. These limits are monitored on an intra-day/daily basis by the Treasury Mid-office and the exceptions are put up to ALCO and Risk Management Committee of the Board.

The Bank uses Historical Simulation and its variants for computing VaR for its trading portfolio. VaR is calculated and reported on a daily basis for the trading portfolios at a 99% confidence level for a one-day holding period, using 250 days of historical data or one year of relative changes in historical rates and prices. The model assumes that the risk factor changes observed in the past are a good estimate of those likely to occur in the future and is, therefore, limited by the relevance of the historical data used. The method, however, does not make any assumption about the nature or type of the loss distribution. The VaR models for different portfolios are back-tested at regular intervals and the results are used to maintain and improve the efficacy of the model.

The VaR measure is supplemented by a series of stress tests and sensitivity analysis that estimates the likely behaviour of a portfolio under extreme but plausible conditions and its impact on earnings and capital. The Bank undertakes stress tests for market risks for its trading book, IRS, forex open position and forex gaps on a monthly basis as well as for liquidity risk at the end of each quarter. The Bank has built its capabilities to migrate to advanced approach i.e. Internal Models Approach for assessment of market risk capital.

Concentration Risk

The Bank has allocated the internal risk limits in order to avoid concentrations, wherever relevant. For example, the Aggregate Gap Limit, Net Open Position and daylight limits are allocated to various currencies and maturities into Individual Gap Limits to monitor concentrations. Similarly, stop-loss limits and duration limits have been set up for different categories within a portfolio. Within the overall PV01 limit, a sub-limit is set up which is not expected to be breached by trades linked to any individual benchmark. Some of the limits like currency wise net open position, stop loss limits and PV01 limits are allocated dealer-wise also, based on their skill and experience, to avoid build up of positions in a single dealer's book.

Liquidity Risk

Liquidity Risk is the current and prospective risk to earnings or capital arising from a Bank's inability to meet its current or future obligations on the due date. Liquidity risk is two-dimensional viz., risk of being unable to fund portfolio of assets at appropriate maturity and rates (liability dimension) and the risk of being unable to liquidate an asset in a timely manner at a reasonable price (asset dimension).

The goal of Liquidity Risk Management is to meet all commitments on the due date and also be able to fund new investment opportunities by raising sufficient funds in the form of increasing fresh liabilities or by expeditious asset sell-off without incurring unacceptable losses, both under normal and adverse conditions. These objectives are ensured by setting up policies, operational level committees, measurement tools and monitoring and reporting mechanism using effective use of IT systems for availability of quality data.

The Bank manages its liquidity on a static as well as dynamic basis using various tools such as gap analysis, ratio analysis, dynamic liquidity statements, intraday liquidity monitoring tools and scenario analysis. The Bank's ALM policy defines the tolerance limits for its structural liquidity position. The Liquidity Policy for the domestic operations as well as for the overseas branches lay down the operational framework for prudent risk management in the Bank. The liquidity profile of the Bank is analysed on a static basis by tracking all cash inflows and outflows in the maturity ladder based on the actual maturity and expected occurrence (for non-maturity items) of cash flows. The liquidity profile of the Bank is also estimated on a dynamic basis by considering the growth in deposits and loans, investment obligations, etc. for a short-term period of three months. The Bank undertakes behavioral analysis of the non-maturity products viz. savings and current deposits and cash credit/overdraft accounts on a periodic basis, to ascertain the volatility of residual balances in those accounts. The renewal pattern and premature withdrawals of term deposits and drawdown of unavailed credit limits are also captured through behavioral studies. The concentration of large deposits is monitored on a periodic basis.

The Bank's ability to meet its obligations and fund itself in a crisis scenario is critical and accordingly, liquidity stress tests are conducted under different scenarios at periodical intervals to assess the impact on liquidity to withstand stressed conditions. The liquidity positions of overseas branches are managed in line with the Bank's internal policies and host country regulations. Such positions are also reviewed centrally by the Bank's ALCO along with domestic positions.

The Bank has adopted the Basel III framework on liquidity standards as prescribed by RBI and has put in place requisite systems and processes to enable periodical computation and reporting of the Liquidity Coverage Ratio (LCR).

Counterparty Risk

The Bank has a Counterparty Risk Management Policy incorporating well laid-down guidelines, processes and measures for counterparty risk management. The policy includes separate counterparty rating models for commercial banks, foreign banks and co-operative banks for determining maximum permissible exposure limits for counterparties. The key financials, quality of management and the level of corporate governance are captured in the counterparty rating model. Counterparty limits are monitored and reported daily and internal triggers have been put in place to guard against breach in limits. Credit exposures to issuer of bonds, advances etc. are monitored separately under the prudential norms for exposure to a single borrower as per the Bank's Corporate Credit Risk Policy or Investment Policy, as applicable. The counterparty exposure limits are reviewed at periodic intervals based on the financials of the counterparties, business need, past transaction experiences and market conditions. The Bank has also put in place the 'Derivatives and Suitability & Appropriateness Policy' and Loan Equivalent Risk (LER) Policy to evaluate counterparty risk arising out of all customer derivatives contracts.

Country Risk

The Bank has a country risk management policy containing the guidelines, systems and processes to effectively identify, assess, monitor and control its country risk exposures. Based on the risk profiling, countries are classified under seven categories i.e. insignificant, low, moderate, high, very high, restricted and off-credit. Risk profiling is based on the ratings provided by Export Credit Guarantee Corporation of India Ltd. (ECGC), Dun & Bradstreet, Standard & Poor's Banking Industry

Country Risk Assessment (BICRA), inputs received from overseas branches/business departments, reports published by various agencies viz. Moody's, Standard & Poor's, Fitch and other publications of repute. The categorisation of countries is reviewed at quarterly intervals or at more frequent intervals if situations so warrant. An exposure to a country comprises all assets, both funded and non-funded, that represents claims on residents of another country. The Bank has in place both category wise and country wise exposure limits. The Bank monitors country risk exposures through a process of trigger limits as well as prior approval system for select categories viz. high, very high, restricted and off-credit to ensure effective monitoring and management of exposures. As a proactive measure of country risk management, Risk department issues 'Rating Watch' from time to time. Further, based on country-specific developments, the concerned business departments are provided updates on countries which have high probability of a rating downgrade.

Risk Management Framework for Overseas Operations

The Bank has put in place separate risk management policies for each of its overseas branches in Singapore, Hong Kong, Dubai, Colombo and Shanghai. These country-specific risk policies are based on the host country regulators' guidelines and in line with the practices followed for the Indian operations. The Asset Liability Management and all the risk exposures for the overseas operations are monitored centrally at the Central Office.

Capital Requirement for Market Risk – Position as on 30th September 2015

Type	(₹ in millions)	
	Amount	of Capital Required
Interest rate risk		25,490
Equity position risk		2,276
Foreign exchange risk (including gold)		789

VIII. OPERATIONAL RISK

Strategies and Processes

Operational Risk (OR) is the risk of loss resulting from inadequate or failed internal processes, people or systems, or from external events. The operational risk management policy documents the Bank's approach towards management of operational risk and defines the roles and responsibilities of the various stakeholders within the Bank. The policy also comprises the detailed framework for operational risk loss data collection, risk and control self-assessment and key risk indicator framework.

Based on the above policy the Bank has initiated several measures to manage operational risk. The Bank has put in place a hierarchical structure to effectively manage operational risk through the formation of several internal committees viz., Operational Risk Management Committee, Product Management Committee, Change Management Committee, Outsourcing Committee, Business Continuity Management Committee (BCMC), and IT Security Committee.

Structure and Organisation

The Risk Management Committee (RMC) of the Board at the apex level is the policy making body. The RMC is supported by the Operational Risk Management Committee (ORMC), consisting of Senior Management personnel, which is responsible for implementation of the Operational Risk policies of the Bank. This internal committee oversees the implementation of the OR framework and oversees the management of operational risks across the Bank. A sub-committee of ORMC (Sub-ORMC) has been constituted to assist the ORMC in discharging its functions by deliberating the operational risk issues in detail and escalating the critical issues to ORMC. A dedicated operational

risk management unit ensures management of operational risk. A representative of the Risk Department is also a permanent member of control committees on product management covering approval of new products, change management of processes, outsourcing, business continuity management and IT Security.

Scope and Nature of Operational Risk Reporting and Measurement Systems

A systematic process for reporting risks, losses and non-compliance issues relating to operational risks has been developed and implemented. The information gathered is being used to develop triggers to initiate corrective actions to improve controls. Critical risks and major loss events are reported to the Senior Management/ORMC.

The Bank has further enhanced its capability for effective management of operational risk with the implementation of an Enterprise Governance Risk and Compliance platform (SAS-EGRC). The IT platform acts as the single repository of processes and operational, compliance and financial reporting risks. It facilitates capturing of individual risks and the effectiveness of their controls, tagging of identified risks to processes and products, originates action plans and acts as a repository of all operational risk events.

Policies for Hedging and Mitigating Operational risk

An Operational Risk Management Policy approved by the Risk Management Committee of the Board details the framework for managing and monitoring operational risk in the Bank. Business units put in place basic internal controls as approved by the Product Management Committee to ensure appropriate controls in the operating environment throughout the Bank. As per the policy, all new products are being vetted by the Product Management Committee to identify and assess potential operational risks involved and suggest control measures to mitigate the risks. Each new product or service introduced is subject to a risk review and sign-off process. Similarly, any changes to the existing products/processes are being vetted by the Change Management Committee.

Key Risk Indicators (KRIs) have been developed for various Business Units of the Bank for effective monitoring of key operational risks. KRIs for the branches have also been launched as a new initiative to help branches to manage operational risk better. The Bank wide trainings are being periodically conducted by the Operational Risk Department.

The Bank has adopted BCP and IT Disaster Recovery Policy wherein critical activities and system applications have been defined, recovery plan is in place for these critical activities and system applications to ensure timely recovery of the Bank's critical products and services in the event of an emergency.

Regular tests have been carried out to ascertain BCP preparedness. The test reports are shared with senior management on a regular frequency. Business Continuity Management Committee (BCMC) has been formed comprising of senior functionaries of the Bank, which monitors BCM framework implementation in the Bank. A sub-committee of the BCMC (sub-BCMC) has been also formed to review and recommend measures to strengthen BCM framework in the Bank.

Approach for Operational Risk Capital Assessment

As per the RBI guidelines, the Bank has followed the Basic Indicator Approach for computing the capital for operational risk for the half year ending 30th September 2015. Based on the measures outlined above, the Bank is preparing itself for migration to the Advanced Measurement Approach of capital computation for operational risk under Basel III.

IX. INTEREST RATE RISK IN THE BANKING BOOK (IRRBB)

Interest Rate Risk in the Banking Book is measured and monitored according to the guidelines laid out in the Bank's Asset Liability Management (ALM) Policy based on the guidelines of RBI's presented in the document "Guidelines on Banks' Asset Liability Management Framework – Interest Rate Risk" dated 4th November 2010. Interest Rate Risk is measured for the (a) entire balance sheet and (b) banking book only through Earnings at Risk and Market Value of Equity Approach as described below.

The Bank employs Earnings at Risk (EaR) measures to assess the sensitivity of its net interest income to parallel movement in interest rates over the 1 year horizon. The Bank measures the level of its exposure of the present value of all assets and liabilities to interest rate risk in terms of sensitivity of Market Value of its Equity (MVE) to interest rate movements as stipulated in the relevant RBI guidelines. Computation of EaR and MVE is done through the ALM software used by the Bank. The Bank prepares Structural Liquidity reports and Interest Rate Sensitivity reports for domestic operations on the daily basis which are reviewed against Regulatory and Internal limits. Internal limits have been established for (a) Earnings at Risk for a 1% parallel shift in interest rates over the horizon of 1 year, and (b) 2% parallel shift in interest rates for Market Value of Equity impact which are reported monthly to ALCO. Any review of the internal interest rate risk limits is approved by the ALCO and is ratified by the Risk Management Committee of the Board.

Interest Rate Risk for Banking Book from both Earnings at Risk perspective as well as Market Value of Equity perspective is computed and reported quarterly in the Stress Testing results of the Bank. Stress testing results are submitted to the Risk Management Committee of the Board as well as the senior management of the Bank for their review.

Interest Rate Risk bucketing of non-maturity based Liability items is based on the Behavioral Analysis policy approved by the ALCO for identification of core and non-core components. Behavioral Analysis is conducted annually by the Bank as well as back tested subsequently. Historical trends in (product-wise) daily / monthly aggregate balances and their associated volatilities in non-maturity based items over a time period of past 3/5 years are used to estimate the likelihood of the drop in balances over specified time intervals. The confidence level for the analysis is considered at 85%, which corresponds to one standard deviation over the mean. 85% confidence level is considered adequate as the structural liquidity analysis is done on a daily basis. Bucketing rules of core and non-core portions in the interest rate sensitivity statements are laid out in the ALM policy. The Bank does not use any assumptions for prepayment of loans for preparation of interest rate risk sensitivity reports.

The findings of the various IRRBB measures are submitted to the ALCO, which is the apex committee for providing strategic guidance and direction for the ALM measures.

Details of increase (decrease) in earnings and economic value for upward and downward rate shocks based on balance sheet as on 30th September 2015 are given below:

Earnings Perspective

(₹ in millions)

Currency	Interest Rate Shock	
	+200bps	-200bps
INR	19,587	(19,587)
USD	52	(52)
Residual	(1,108)	1,108
Total	18,531	(18,531)

Economic Value Perspective

(₹ in millions)

Currency	Interest Rate Shock	
	+200bps	-200bps
INR	20,776	(20,776)
USD	(2,999)	2,999
Residual	1,223	(1,223)
Total	19,000	(19,000)

Note: Interest Rate Risk in Banking Book is computed only for banks/bank like entities where the inherent business is maturity transformation of assets and liabilities, thereby resulting in interest rate mismatch. Other subsidiaries whose core business is not banking activity, IRRBB need not be computed.

X. EXPOSURES RELATED TO COUNTERPARTY CREDIT RISK

Counterparty credit limits and exposures are monitored daily and internal triggers are put in place to guard against breach in limits. Credit exposures to issuer of bonds, advances etc. are monitored separately under the prudential norms for exposure to a single borrower as per the Bank's Corporate Credit Risk Policy or Investment Policy, as applicable. The counterparty exposure limits are reviewed at periodic intervals.

Methodology used to assign economic capital and credit limits for counterparty credit exposures

The Bank currently does not assign economic capital for its counterparty credit exposures. The Bank has adopted a methodology of computing economic capital within the framework of Individual Capital Adequacy Assessment Process (ICAAP) and assesses the economic capital requirement within this framework. The Bank is adequately capitalized in terms of projected growth for the next three years and has sufficient capital buffer to account for Pillar II risks.

Policies for securing collateral and establishing credit reserves

The Bank has a policy framework through its Credit Risk Management policy and Collateral Management Policy which stipulates the eligible credit risk mitigants and management thereof. The Bank has adopted the Comprehensive Approach as suggested by RBI, which allows fuller offset of collateral against exposures, by effectively reducing the exposure amount by the value ascribed to the collateral. Under this approach, the Bank takes eligible financial collateral on an account-by-account basis, to reduce the credit exposure to counterparty while calculating the capital requirements to take account of the risk mitigating effect of the collateral. The Bank also has a well-defined NPA management & recovery policy for establishing credit reserves on a prudential basis apart from being in consonance with the regulatory guidelines.

Policies with respect to wrong-way risk exposures

Wrong way risk associated with counterparty credit exposures can be of two types – General i.e. when the PD of counterparties is positively correlated with general market risk factors and Specific i.e. when the exposure to a particular counterparty and the PD of the counterparty providing credit risk mitigation for the exposure are highly correlated. The Bank currently does not have a complete policy framework to address the wrong way risk. In the interim, the general wrong way risk is taken care of through monitoring of concentration of counterparty credit exposures on account of derivatives. Also as per the credit risk management policy, collaterals whose values have a material positive correlation with the credit quality of the borrower is likely to provide little or no credit

protection during stress, are not recognized for credit enhancement, thus mitigating any specific wrong way risk.

Impact of the amount of collateral the Bank would have to provide given a credit rating downgrade

The Bank currently assesses the liquidity impact and related costs of a possible downgrade as part of the bank-wide stress testing exercise. The Bank has already adopted Credit Value Adjustment (CVA) based on the regulatory guidelines on the asset side for capital computation purposes. The current regulatory guidelines do not require estimation of changes in collateral requirement in case of a likely rating downgrade of a Bank and the Bank also does not make such an assessment currently. However, the Bank is in the process of developing an internal methodology to estimate the changes in liabilities to counterparties in the event of its rating downgrade.

Quantitative Disclosures

(₹ in millions)

Particulars	IRS/CCS/FRA	OPTIONS
Gross Positive Fair Value of Contracts	44,245	7,460
Netting Benefits	-	-
Netted Current Credit Exposure	44,245	7,460
Collateral held (e.g. Cash, G-sec, etc.)	-	-
Net Derivatives Credit Exposure	44,245	7,460
Exposure amount (under CEM)	167,308	13,792
Notional value of Credit Derivative hedges	-	-
Credit derivative transactions that create exposures to CCR	-	-

XI. COMPOSITION OF CAPITAL

(₹ in millions)

Sr. No.	Particulars	Amount	Amounts Subject to Pre-Basel III Treatment	Reference No.
Common Equity Tier 1 capital: instruments and reserves				
1	Directly issued qualifying common share capital plus related stock surplus (share premium)	170,395		A1 + A2
2	Retained earnings	277,756		B1+B2+B3+B4+ B5-B6
3	Accumulated other comprehensive income (and other reserves)	-		
4	Directly issued capital subject to phase out from CET1 (only applicable to non-joint stock companies)	-		
	Public sector capital injections grandfathered until 1 January 2018	-		
5	Common share capital issued by subsidiaries and held by third parties (amount allowed in group CET1)	-		

(₹ in millions)

Sr. No.	Particulars	Amount	Amounts Subject to Pre-Basel III Treatment	Reference No.
6	Common Equity Tier 1 capital before regulatory adjustments	448,151		
Common Equity Tier 1 capital: regulatory adjustments				
7	Prudential valuation adjustments	1,775		
8	Goodwill (net of related tax liability)	-		
9	Intangibles other than mortgage-servicing rights (net of related tax liability)	-		
10	Deferred tax assets	12,328	8,219	D1-D2
11	Cash-flow hedge reserve	-		
12	Shortfall of provisions to expected losses	-		
13	Securitisation gain on sale	-		
14	Gains and losses due to changes in own credit risk on fair valued liabilities	-		
15	Defined-benefit pension fund net assets	-		
16	Investments in own shares (if not already netted off paid-in capital on reported balance sheet)	-		
17	Reciprocal cross-holdings in common equity	307	205	
18	Investments in the capital of banking, financial and insurance entities that are outside the scope of regulatory consolidation, net of eligible short positions, where the bank does not own more than 10% of the issued common share capital (amount above 10% threshold)	-		
19	Significant investments in the common stock of banking, financial and insurance entities that are outside the scope of regulatory consolidation, net of eligible short positions (amount above 10% threshold)	-		
20	Mortgage servicing rights (amount above 10% threshold)	-		
21	Deferred tax assets arising from temporary differences (amount above 10% threshold, net of related tax liability)	-		
22	Amount exceeding the 15% threshold	-		
23	of which: significant investments in the common stock of financial entities	-		
24	of which: mortgage servicing rights	-		
25	of which: deferred tax assets arising from temporary differences	-		
26	National specific regulatory adjustments (26a+26b+26c+26d)	-		
26a	of which: Investments in the equity capital of the unconsolidated insurance subsidiaries	-		
26b	of which: Investments in the equity capital of unconsolidated non-financial subsidiaries	-		

(₹ in millions)

Sr. No.	Particulars	Amount	Amounts Subject to Pre-Basel III Treatment	Reference No.
26c	<i>of which:</i> Shortfall in the equity capital of majority owned financial entities which have not been consolidated with the bank	-		
26d	<i>of which:</i> Unamortised pension funds expenditures	-		
	Regulatory Adjustments Applied to Common Equity Tier 1 in respect of Amounts Subject to Pre-Basel III Treatment	-		
	<i>of which:</i> [INSERT TYPE OF ADJUSTMENT] For example: filtering out of unrealised losses on AFS debt securities (not relevant in Indian context)	-		
	<i>of which:</i> [INSERT TYPE OF ADJUSTMENT]	-		
	<i>of which:</i> [INSERT TYPE OF ADJUSTMENT]	-		
27	Regulatory adjustments applied to Common Equity Tier 1 due to insufficient Additional Tier 1 and Tier 2 to cover deductions	4,950		
28	Total regulatory adjustments to Common equity Tier 1	19,360		
29	Common Equity Tier 1 capital (CET 1)	428,791		
Additional Tier 1 capital: instruments				
30	Directly issued qualifying Additional Tier 1 instruments plus related stock surplus (31+32)	-		
31	<i>of which:</i> classified as equity under applicable accounting standards (Perpetual Non-Cumulative Preference Shares)	-		
32	<i>of which:</i> classified as liabilities under applicable accounting standards (Perpetual debt Instruments)	-		
33	<i>Directly issued capital instruments subject to phase out from Additional Tier 1</i>	3,269		C1
34	Additional Tier 1 instruments (and CET1 instruments not included in row 5) issued by subsidiaries and held by third parties (amount allowed in group AT1)	-		
35	<i>of which: instruments issued by subsidiaries subject to phase out</i>	-		
36	Additional Tier 1 capital before regulatory adjustments	3,269		
Additional Tier 1 capital: regulatory adjustments				
37	Investments in own Additional Tier 1 instruments	-		
38	Reciprocal cross-holdings in Additional Tier 1 instruments	-		

(₹ in millions)

Sr. No.	Particulars	Amount	Amounts Subject to Pre-Basel III Treatment	Reference No.
39	Investments in the capital of banking, financial and insurance entities that are outside the scope of regulatory consolidation, net of eligible short positions, where the bank does not own more than 10% of the issued common share capital of the entity (amount above 10% threshold)	-		
40	Significant investments in the capital of banking, financial and insurance entities that are outside the scope of regulatory consolidation (net of eligible short positions)	-		
41	National specific regulatory adjustments (41a+41b)	-		
41a	Investments in the Additional Tier 1 capital of unconsolidated insurance subsidiaries	-		
41b	Shortfall in the Additional Tier 1 capital of majority owned financial entities which have not been consolidated with the bank	-		
	Regulatory Adjustments Applied to Additional Tier 1 in respect of Amounts Subject to Pre-Basel III Treatment	8,219		
	<i>of which:</i> DTA	8,219		
	<i>of which:</i> [INSERT TYPE OF ADJUSTMENT e.g. existing adjustments which are deducted from Tier 1 at 50%]	-		
	<i>of which:</i> [INSERT TYPE OF ADJUSTMENT]	-		
42	Regulatory adjustments applied to Additional Tier 1 due to insufficient Tier 2 to cover deductions	-		
43	Total regulatory adjustments to Additional Tier 1 capital	8,219		
44	Additional Tier 1 capital (AT1)	(4,950)		
45	Tier 1 capital (T1 = CET1 + AT1) (29 + 44)	428,791		
Tier 2 capital: instruments and provisions				
46	Directly issued qualifying Tier 2 instruments plus related stock surplus	23,500		C1
47	Directly issued capital instruments subject to phase out from Tier 2	81,004		C1
48	Tier 2 instruments (and CET1 and AT1 instruments not included in rows 5 or 34) issued by subsidiaries and held by third parties (amount allowed in group Tier 2)	-		
49	<i>of which: instruments issued by subsidiaries subject to phase out</i>	-		
50	Provisions	19,450		E1+E2+E3+E4
51	Tier 2 capital before regulatory adjustments	123,954		
Tier 2 capital: regulatory adjustments				
52	Investments in own Tier 2 instruments	-		

(₹ in millions)

Sr. No.	Particulars	Amount	Amounts Subject to Pre-Basel III Treatment	Reference No.
53	Reciprocal cross-holdings in Tier 2 instruments	356	237	
54	Investments in the capital of banking, financial and insurance entities that are outside the scope of regulatory consolidation, net of eligible short positions, where the bank does not own more than 10% of the issued common share capital of the entity (amount above the 10% threshold)	-		
55	Significant investments in the capital banking, financial and insurance entities that are outside the scope of regulatory consolidation (net of eligible short positions)	-		
56	National specific regulatory adjustments (56a+56b)	-		
56a	<i>of which:</i> Investments in the Tier 2 capital of unconsolidated subsidiaries	-		
56b	<i>of which:</i> Shortfall in the Tier 2 capital of majority owned financial entities which have not been consolidated with the bank	-		
	Regulatory Adjustments Applied To Tier 2 in respect of Amounts Subject to Pre-Basel III Treatment	-		
	<i>of which:</i> [INSERT TYPE OF ADJUSTMENT e.g. existing adjustments which are deducted from Tier 2 at 50%]	-		
	<i>of which:</i> [INSERT TYPE OF ADJUSTMENT]	-		
57	Total regulatory adjustments to Tier 2 capital	356		
58	Tier 2 capital (T2)	123,598		
59	Total capital (TC = T1 + T2) (45 + 58)	552,389		
	Risk Weighted Assets in respect of Amounts Subject to Pre-Basel III Treatment	1,078		
	<i>of which:</i> [INSERT TYPE OF ADJUSTMENT]			
	<i>of which:</i> ...			
60	Total risk weighted assets (60a + 60b + 60c)	3,804,289		
60a	<i>of which: total credit risk weighted assets</i>	3,121,737		
60b	<i>of which: total market risk weighted assets</i>	317,280		
60c	<i>of which: total operational risk weighted assets</i>	365,272		
61	Common Equity Tier 1 (as a percentage of risk weighted assets)	11.27%		
62	Tier 1 (as a percentage of risk weighted assets)	11.27%		
63	Total capital (as a percentage of risk weighted assets)	14.52%		

(₹ in millions)

Sr. No.	Particulars	Amount	Amounts Subject to Pre-Basel III Treatment	Reference No.
64	Institution specific buffer requirement (minimum CET1 requirement plus capital conservation and countercyclical buffer requirements, expressed as a percentage of risk weighted assets)	5.50%		
65	of which: capital conservation buffer requirement	0.00%		
66	of which: bank specific countercyclical buffer requirement	-		
67	of which: G-SIB buffer requirement	-		
68	Common Equity Tier 1 available to meet buffers (as a percentage of risk weighted assets)	-		
National minima (if different from Basel III)				
69	National Common Equity Tier 1 minimum ratio (if different from Basel III minimum)	5.50%		
70	National Tier 1 minimum ratio (if different from Basel III minimum)	7.00%		
71	National total capital minimum ratio (if different from Basel III minimum)	9.00%		
Amounts below the thresholds for deduction (before risk weighting)				
72	Non-significant investments in the capital of other financial entities	25,598		
73	Significant investments in the common stock of financial entities	-		
74	Mortgage servicing rights (net of related tax liability)	NA		
75	Deferred tax assets arising from temporary differences (net of related tax liability)	NA		
Applicable caps on the inclusion of provisions in Tier 2				
76	Provisions eligible for inclusion in Tier 2 in respect of exposures subject to standardised approach (prior to application of cap)	19,450		
77	Cap on inclusion of provisions in Tier 2 under standardised approach	39,022		
78	Provisions eligible for inclusion in Tier 2 in respect of exposures subject to internal ratings-based approach (prior to application of cap)	NA		
79	Cap for inclusion of provisions in Tier 2 under internal ratings-based approach	NA		
Capital instruments subject to phase-out arrangement (only applicable between March 31, 2017 and March 31, 2022)				
80	Current cap on CET1 instruments subject to phase out arrangements	NA		
81	Amount excluded from CET1 due to cap (excess over cap after redemptions and maturities)	NA		
82	Current cap on AT1 instruments subject to phase out arrangements	NA		

(₹ in millions)

Sr. No.	Particulars	Amount	Amounts Subject to Pre-Basel III Treatment	Reference No.
83	Amount excluded from AT1 due to cap (excess over cap after redemptions and maturities)	NA		
84	Current cap on T2 instruments subject to phase out arrangements	NA		
85	Amount excluded from T2 due to cap (excess over cap after redemptions and maturities)	NA		

* NA – Not Applicable

Notes to the Template

Row No. of the template	Particular	(₹ in million)
10	Deferred tax assets associated with accumulated losses	-
	Deferred tax assets (excluding those associated with accumulated losses) net of Deferred tax liability	20,547
	Total as indicated in row 10	20,547
19	If investments in insurance subsidiaries are not deducted fully from capital and instead considered under 10% threshold for deduction, the resultant increase in the capital of the bank	-
	of which: Increase in Common Equity Tier 1 capital	-
	of which: Increase in Additional Tier 1 capital	-
	of which: Increase in Tier 2 capital	-
26b	If investments in the equity capital of unconsolidated non-financial subsidiaries are not deducted and hence, risk weighted then:	
	(i) Increase in Common Equity Tier 1 capital	-
	(ii) Increase in risk weighted assets	-
50	Eligible Provisions included in Tier 2 capital	19,450
	Eligible Revaluation Reserves included in Tier 2 capital	-
	Total of row 50	19,450

XII. THE RECONCILIATION OF REGULATORY CAPITAL ITEMS AS ON 30th SEPTEMBER 2015 IS GIVEN BELOW:
Step 1

(₹ in millions)			
Sr. No.	Particulars	Balance sheet as in financial statements	Balance sheet under regulatory scope of consolidation
A	Capital and Liabilities		
I	Paid-up Capital	4,756	4,756
	Reserves & Surplus	487,256	487,256
	Minority Interest	345	345
	Total Capital	492,357	492,357
II	Deposits	3,238,730	3,238,730
	<i>of which:</i> Deposits from banks	116,425	116,425
	<i>of which:</i> Customer deposits	3,122,305	3,122,305
III	Borrowings	886,520	886,520
	i. Borrowings in India	298,815	298,815
	(a) From RBI	-	-
	(b) From banks	23,147	23,147
	(c) From other institutions & agencies	275,668	275,668
	ii. Borrowings Outside India	587,705	587,705
	<i>of which:</i> Capital Instruments	149,009	149,009
IV	Other liabilities & provisions	158,211	158,211
	Total	4,775,818	4,775,818
B	Assets		
I	Cash and balances with Reserve Bank of India	167,985	167,985
	Balance with banks and money at call and short notice	132,186	132,186
II	Investments	1,140,666	1,140,666
	<i>of which:</i> Government securities	825,430	825,430
	<i>of which:</i> Shares	7,302	7,302
	<i>of which:</i> Debentures & Bonds	245,159	245,159
	<i>of which:</i> Subsidiaries / Joint Ventures / Associates	-	-
<i>of which:</i> Others (Commercial Papers, Mutual Funds etc.)	62,775	62,775	
III	Loans and advances	3,019,672	3,019,672
IV	Fixed assets	26,257	26,257
V	Other assets	289,052	289,052
	<i>of which:</i> Goodwill and intangible assets	-	-
	<i>of which:</i> Deferred tax assets (Net)	20,547	20,547
VI	Goodwill on consolidation	-	-
VII	Debit balance in Profit & Loss account	-	-
	Total Assets	4,775,818	4,775,818

Step 2

(₹ in millions)

Sr. No.	Particulars	Balance sheet as in financial statements	Balance sheet under regulatory scope of consolidation	Reference No.
A	Capital and Liabilities			
I	Paid-up Capital	4,756	4,756	A1
	Reserves & Surplus	487,256	487,256	-
	<i>of which:</i>			
	Statutory Reserve	85,313	85,313	B1
	Share Premium	165,639	165,639	A2
	Investment Reserve Account	1,290	1,290	E1
	General Reserve	3,742	3,742	B2
	Capital Reserve	10,480	10,480	B3
	Foreign Currency Translation Reserve	3,497	3,497	-
	Reserve Fund	328	328	B4
	Balance in Profit/Loss A/c	216,967	216,967	
	<i>Of which:</i>			
	Unallocated Surplus	177,898	177,898	B5
	Current Period Operating Loss relating to subsidiaries	(5)	(5)	B6
	Current periods profit not reckoned for capital adequacy	39,074	39,074	
	Minority Interest	345	345	-
	<i>of which:</i> considered under capital funds	-	-	-
Total Capital	492,357	492,357	-	
II	Deposits	3,238,730	3,238,730	-
	<i>of which:</i> Deposits from banks	116,425	116,425	-
	<i>of which:</i> Customer deposits	3,122,305	3,122,305	-
III	Borrowings	886,520	886,520	-
	i. Borrowings in India	298,815	298,815	-
	(a) From RBI	-	-	-
	(b) From banks	23,147	23,147	-
	(c) From other institutions & agencies	275,668	275,668	-
	ii. Borrowings Outside India	587,705	587,705	-
	<i>of which:</i> Capital Instruments	149,009	149,009	C1
IV	Other liabilities & provisions	158,211	158,211	-
	<i>of which:</i> Provision for Standard Advances	16,838	16,838	E2
	<i>of which:</i> Provision for Unhedged Foreign Currency Exposure	1,289	1,289	E3
	<i>of which:</i> Deferred Tax Liability	459	459	D2
	Total	4,775,818	4,775,818	

Sr. No.	Particulars	Balance sheet as in financial statements	Balance sheet under regulatory scope of consolidation	Reference No.
B	Assets			
I	Cash and balances with Reserve Bank of India	167,985	167,985	-
	Balance with banks and money at call and short notice	132,186	132,186	-
II	Investments	1,140,666	1,140,666	-
	<i>of which: Government securities</i>	825,430	825,430	-
	<i>of which: Shares</i>	7,302	7,302	-
	<i>of which: Debentures & Bonds</i>	245,159	245,159	-
	<i>of which: Subsidiaries / Joint Ventures / Associates</i>	-	-	-
	<i>of which: Others (Commercial Papers, Mutual Funds etc.)</i>	62,775	62,775	-
III	Loans and advances	3,019,672	3,019,672	-
	floating provision adjusted in loans & advances	33	33	E4
IV	Fixed assets	26,257	26,257	-
V	Other assets	289,052	289,052	-
	<i>of which: Goodwill and intangible assets</i>	-	-	-
	<i>of which: Deferred tax assets</i>	21,006	21,006	D1
VI	Goodwill on consolidation	-	-	-
VII	Debit balance in Profit & Loss account	-	-	-
	Total Assets	4,775,818	4,775,818	-

XIII. MAIN FEATURES OF REGULATORY CAPITAL

The main features of equity capital are given below:

Sr. No.	Particulars	Equity
1	Issuer	Axis Bank Ltd.
2	Unique identifier	ISIN: INE238A01026
3	Governing law(s) of the instrument	Indian Laws
	Regulatory treatment	
4	Transitional Basel III rules	Common Equity Tier I
5	Post-transitional Basel III rules	Common Equity Tier I
6	Eligible at solo/group/ group & solo	Solo & Group
7	Instrument type	Common Shares
8	Amount recognised in regulatory capital (as of most recent reporting date)	₹ 4,756 millions
9	Par value of instrument	₹ 2 per share

Sr. No.	Particulars	Equity
10	Accounting classification	Shareholder's Equity
11	Original date of issuance	Various*
12	Perpetual or dated	Perpetual
13	Original maturity date	No Maturity
14	Issuer call subject to prior supervisory approval	No
15	Optional call date, contingent call dates and redemption amount	NA
16	Subsequent call dates, if applicable	NA
	Coupons / dividends	
17	Fixed or floating dividend/coupon	NA
18	Coupon rate and any related index	NA
19	Existence of a dividend stopper	No
20	Fully discretionary, partially discretionary or mandatory	Fully Discretionary
21	Existence of step up or other incentive to redeem	No
22	Non-cumulative or cumulative	Non-Cumulative
23	Convertible or non-convertible	NA
24	If convertible, conversion trigger(s)	NA
25	If convertible, fully or partially	NA
26	If convertible, conversion rate	NA
27	If convertible, mandatory or optional conversion	NA
28	If convertible, specify instrument type convertible into	NA
29	If convertible, specify issuer of instrument it converts into	NA
30	Write-down feature	No
31	If write-down, write-down trigger(s)	NA
32	If write-down, full or partial	NA
33	If write-down, permanent or temporary	NA
34	If temporary write-down, description of write-up mechanism	NA
35	Position in subordination hierarchy in liquidation (specify instrument type immediately senior to instrument)	Perpetual Debt Instruments
36	Non-compliant transitioned features	No
37	If yes, specify non-compliant features	NA

*Various dates of issuance of equity are as follows:

8th December 1993, 2nd April 1994, 28th September 1994, 26th October 1994, 23rd October 1998, 31st December 2001, 28th March 2002, 30th March 2002, 28th March 2003, 21st March 2005, 25th April 2005, 27th July 2007, 24th September 2009, 20th October 2012, 4th February 2013.

The main features of Tier - 1 capital instruments are given below:

Sr. No.	Particulars	Series 12	\$ 46 Million Hybrid Tier I Notes
1	Issuer	Axis Bank Ltd.	Axis Bank Ltd.
2	Unique identifier (e.g. CUSIP, ISIN or Bloomberg identifier for private placement)	INE238A08252	XS0274732295
3	Governing law(s) of the instrument	Indian Laws	English laws and Indian laws.
Regulatory treatment			
4	Transitional Basel III rules	Additional Tier 1	Additional Tier I
5	Post-transitional Basel III rules	Ineligible	Ineligible
6	Eligible at solo/group/ group & solo	Solo & Group	Solo & Group
7	Instrument type	Perpetual Debt	Perpetual Debt
8	Amount recognised in regulatory capital (₹ in million, as of most recent reporting date)	₹ 2,140 million	₹ 3,017 million
9	Par value of instrument	₹ 2,140 million and each debenture of ₹ 1 million	\$ 46 Million and \$ 0.1 million per Note
10	Accounting classification	Liability	Liability
11	Original date of issuance	30 th September 2006	15 th November 2006
12	Perpetual or dated	Perpetual	Perpetual
13	Original maturity date	No Maturity	No Maturity
14	Issuer call subject to prior supervisory approval	Yes	Yes
15	Optional call date, contingent call dates and redemption amount	Optional call date: 30 th September 2016 Contingent Call Dates: NA Redemption at par	Optional Call Date: 16 th November 2016 Contingent call dates: NA Redemption At Par
16	Subsequent call dates, if applicable	Every interest payment date after 30 th September 2016	16 th May & 16 th November in each year commencing 16 th November 2016
Coupons / dividends			
17	Fixed or floating dividend/coupon	Fixed	Fixed to Floating
18	Coupon rate and any related index	10.05% p.a. payable semi-annually from issue date till the first call option date 30 th September, 2016 and if the Bank does not exercise the call option, 100 bps over and above coupon rate of 10.05% i.e. 11.05 % semi-annual from 30 th September, 2016	7.167% p.a., payable semi-annually from issue date till first call option date 16 th November 2016 and If Issue is not called, floating rate provision applicable in respect of the period from (and including) the first optional redemption date. Reference rate : 6 Month \$ LIBOR, Margin :

Sr. No.	Particulars	Series 12	\$ 46 Million Hybrid Tier I Notes
			3% p.a.
19	Existence of a dividend stopper	No	No
20	Fully discretionary, partially discretionary or mandatory	Partially discretionary	Partially discretionary
21	Existence of step up or other incentive to redeem	Yes	Yes
22	Noncumulative or cumulative	Non-cumulative	Non-cumulative
23	Convertible or non-convertible	Non-Convertible	Non-Convertible
24	If convertible, conversion trigger(s)	NA	NA
25	If convertible, fully or partially	NA	NA
26	If convertible, conversion rate	NA	NA
27	If convertible, mandatory or optional conversion	NA	NA
28	If convertible, specify instrument type convertible into	NA	NA
29	If convertible, specify issuer of instrument it converts into	NA	NA
30	Write-down feature	No	No
31	If write-down, write-down trigger(s)	NA	NA
32	If write-down, full or partial	NA	NA
33	If write-down, permanent or temporary	NA	NA
34	If temporary write-down, description of write-up mechanism	NA	NA
35	Position in subordination hierarchy in liquidation (specify instrument type immediately senior to instrument)	The claims of the investors in these Debentures shall be subordinate to the claims of all creditors including all claims, liabilities and investments forming a part of our Tier II capital, from time to time	Claims in respect of the Hybrid Tier I Notes will rank (i) pari passu and without preference among themselves (ii) pari passu with claims of creditors of the Issuer which are subordinated so as to rank pari passu with claims in respect of the Hybrid Tier I Notes and (iii) in priority to the rights and claims of holders of the equity shares of the Issuer.
36	Non-compliant transitioned features	Yes	Yes
37	If yes, specify non-compliant features	Step Up, No Basel III Loss Absorbency	No Basel III Loss Absorbency

The main features of Upper Tier - 2 capital instruments are given below:

Sr. No.	Particulars	Series 13	Series 14	\$60 Million Subordinated Notes	\$ 150 Million Subordinated Notes
1	Issuer	Axis Bank Ltd.	Axis Bank Ltd.	Axis Bank Ltd.	Axis Bank Ltd.
2	Unique identifier (e.g. CUSIP, ISIN or Bloomberg identifier for private placement)	INE238A08260	INE238A08278	XS0308100667	XS0264045419
3	Governing law(s) of the instrument	Indian Laws	Indian Laws	English laws and Indian laws	English laws and Indian laws
Regulatory treatment					
4	Transitional Basel III rules	Tier 2	Tier 2	Tier 2	Tier 2
5	Post-transitional Basel III rules	Ineligible	Ineligible	Ineligible	Ineligible
6	Eligible at solo/group/group & solo	Solo & Group	Solo & Group	Solo & Group	Solo & Group
7	Instrument type	Upper Tier II	Upper Tier II	Upper Tier II	Upper Tier II
8	Amount recognised in regulatory capital (₹ in million, as of most recent reporting date)	₹ 2,000 million	₹ 1,075 million	₹ 3,933 million	₹ 9,837 million
9	Par value of instrument	₹ 2,000 Million and each debenture of ₹ 1 million	₹ 1,075 Million and each debenture of ₹ 1 million	\$ 60 Million and \$ 0.1 Million per note and integral multiples of \$ 1,000 in excess thereof, up to and including \$ 199,000	\$ 150 Million and \$ 0.1 Million per Note
10	Accounting classification	Liability	Liability	Liability	Liability
11	Original date of issuance	24 th Nov 2006	6 th Feb 2007	28 th Jun 2007	11 th Aug 2006
12	Perpetual or dated	Dated	Dated	Dated	Dated
13	Original maturity date	24 th Nov 2021	6 th Feb 2022	The Interest Payment Date falling in or nearest to June 2022	The Interest Payment Date falling in August 2021
14	Issuer call subject to prior	Yes	Yes	Yes	Yes

Sr. No.	Particulars	Series 13	Series 14	\$60 Million Subordinated Notes	\$ 150 Million Subordinated Notes
	supervisory approval				
15	Optional call date, contingent call dates and redemption amount	Optional Call Date: 24 th November 2016 Contingent call dates: NA Redemption At Par	Optional Call Date: 6 th February 2017 Contingent call dates: NA Redemption At Par	Optional Call Date: The Interest Payment Date falling in or nearest to 28 June 2017 Contingent call dates: NA Redemption At Par	Optional Call Date: The Interest Payment Date falling in August 2016 Contingent call dates: NA Redemption At Par
16	Subsequent call dates, if applicable	NA	NA	Each interest payment date from and including the interest payment date falling in or nearest to 28 June 2017, up to and including the interest payment date falling in or nearest to 28 Dec 2021	NA
Coupons / dividends					
17	Fixed or floating dividend / coupon	Fixed	Fixed	Fixed to floating	Fixed
18	Coupon rate and any related index	9.35% p.a. payable annually from issue date till the first call option date 24 th November 2016 and if the call option is not exercised by the bank then 50 bps over and above coupon rate of 9.35% i.e. 9.85% p.a. payable annually from 24 th November 2016	9.50% p.a. payable annually from issue date till the first call option date 6 th February 2017 and if the call option is not exercised by the bank then 100 bps over and above coupon rate of 9.50% i.e. 10.50% p.a. payable annually from 6 th February	7.125 % p.a, payable semi annually from issue date till the first call option date and if issue is not called then floating rate provision applicable from & including 28 June 2017 to but excluding the maturity date. Reference rate : 6Month \$ LIBOR, Margin : 2.45% p.a.	7.25 % p.a, payable semi annually from issue date till the first call option date and if issue is not called then the rate of interest applicable in respect of interest accruing from (and including) the optional redemption date to the maturity date shall be the Reset Rate (UST + 3.315% as defined in the pricing supplement)

Sr. No.	Particulars	Series 13	Series 14	\$60 Million Subordinated Notes	\$ 150 Million Subordinated Notes
			2017		
19	Existence of a dividend stopper	No	No	No	No
20	Fully discretionary, partially discretionary or mandatory	Partially discretionary	Partially discretionary	Partially discretionary	Partially discretionary
21	Existence of step up or other incentive to redeem	Yes	Yes	Yes	Yes
22	Noncumulative or cumulative	Non-Cumulative	Non-Cumulative	Non-cumulative	Non-cumulative
23	Convertible or non-convertible	Non-Convertible	Non-Convertible	Non-Convertible	Non-Convertible
24	If convertible, conversion trigger(s)	NA	NA	NA	NA
25	If convertible, fully or partially	NA	NA	NA	NA
26	If convertible, conversion rate	NA	NA	NA	NA
27	If convertible, mandatory or optional conversion	NA	NA	NA	NA
28	If convertible, specify instrument type convertible into	NA	NA	NA	NA
29	If convertible, specify issuer of instrument it converts into	NA	NA	NA	NA
30	Write-down feature	No	No	No	No
31	If write-down, write-down trigger(s)	NA	NA	NA	NA
32	If write-down, full or partial	NA	NA	NA	NA
33	If write-down, permanent or temporary	NA	NA	NA	NA
34	If temporary write-down, description of write-up mechanism	NA	NA	NA	NA

Sr. No.	Particulars	Series 13	Series 14	\$60 Million Subordinated Notes	\$ 150 Million Subordinated Notes
35	Position in subordination hierarchy in liquidation (specify instrument type immediately senior to instrument)	Debentures shall be subordinate to the claims of all creditors including Lower Tier II Debentures.		The claims of the holders of Subordinated Notes and any relative Receipts and Coupons pursuant thereto will be subordinated in right of payment to the claims of all other creditors (other than claims of holders of Subordinated Indebtedness ranking equal to or lower than the claims of the holders of Subordinated Notes and any relative Receipts and Coupons, if any) of the Issuer.	
36	Non-compliant transitioned features	Yes	Yes	Yes	Yes
37	If yes, specify non-compliant features	Step up; No Basel III Loss Absorbency	Step up; No Basel III Loss Absorbency	No Basel III Loss Absorbency	No Basel III Loss Absorbency

The main features of Subordinated debt capital instruments are given below:

Sr No.	Particulars	SERIES 11(i) Option 2	SERIES 11(i) Option 2A	SERIES 11(ii) Option II	SERIES 15	SERIES 16	SERIES 17	SERIES 18	SERIES 19	SERIES 20	SERIES 21	SERIES 22	SERIES 23
1	Issuer	Axis Bank Ltd	Axis Bank Ltd	Axis Bank Ltd	Axis Bank Ltd	Axis Bank Ltd	Axis Bank Ltd.	Axis Bank Ltd	Axis Bank Ltd	Axis Bank Ltd	Axis Bank Ltd	Axis Bank Ltd	Axis Bank Ltd
2	Unique identifier	INE238A08211	INE238A08229	INE238A08245	INE238A08286	INE238A08294	INE238A08302	INE238A08310	INE238A08328	INE238A08336	INE238A08344	INE238A08369	INE238A08377
3	Governing law(s) of the instrument	Indian Laws	Indian Laws	Indian Laws	Indian Laws	Indian Laws	Indian Laws	Indian Laws	Indian Laws	Indian Laws	Indian Laws	Indian Laws	Indian Laws
Regulatory treatment													
4	Transitional Basel III rules	Tier 2	Tier 2	Tier 2	Tier 2	Tier 2	Tier 2	Tier 2	Tier 2	Tier 2	Tier 2	Tier 2	Tier 2
5	Post-transitional Basel III rules	Ineligible	Ineligible	Ineligible	Ineligible	Ineligible	Ineligible	Ineligible	Ineligible	Ineligible	Ineligible	Tier 2	Tier 2
6	Eligible at solo/group/group & solo	Solo & Group	Solo & Group	Solo & Group	Solo & Group	Solo & Group	Solo & Group	Solo & Group	Solo & Group	Solo & Group	Solo & Group	Solo & Group	Solo & Group
7	Instrument type	Tier 2 Instruments	Tier 2 Instruments	Tier 2 Instruments	Tier 2 Instruments	Tier 2 Instruments	Tier 2 Instruments	Tier 2 Instruments	Tier 2 Instruments	Tier 2 Instruments	Tier 2 Instruments	Tier 2 Instruments	Tier 2 Instruments
8	Amount recognised in regulatory capital	NIL	NIL	NIL	₹ 502 Mn	₹9,000Mn	₹1,200 Mn	₹12,000Mn	₹15,000 Mn	₹19,250 Mn	₹ 25,000 Mn	₹ 8,500 Mn	₹ 15,000 Mn
9	Par value of instrument	₹ 3,600 million and each debenture of ₹ 1 million	₹ 100 million and each debenture of ₹ 1 million	₹ 1,049 million and each debenture of ₹ 1 million	₹ 2,509 million and each debenture of ₹ 1 million	₹ 15,000 million and each debenture of ₹ 1 million	₹ 2,000 million and each debenture of ₹ 1 million	₹ 20,000 million and each debenture of ₹ 1 million	₹ 15,000 million and each debenture of ₹ 1 million	₹ 19,250 million and each debenture of ₹ 1 million	₹ 25,000 million and each debenture of ₹ 1 million	₹ 8,500 million including ₹ 500 million of Green Shoe	₹ 15,000 million and each debenture of ₹ 1 million

Sr · N o.	Particulars	SERIES 11(i) Option 2	SERIES 11(i) Option 2A	SERIES 11(ii) Option II	SERIES 15	SERIES 16	SERIES 17	SERIES 18	SERIES 19	SERIES 20	SERIES 21	SERIES 22	SERIES 23
												Option and each debentur e of ₹ 1 million	
1 0	Accounting classificatio n	Liability	Liability	Liability	Liability	Liability	Liability	Liability	Liability	Liability	Liability	Liability	Liability
1 1	Original date of issuance	22 nd Mar 2006	22 nd Mar 2006	28 th Jun 2006	30 th Mar 2007	7 th Nov 2008	28 th Mar 2009	16 th Jun 2009	1 st Dec 2011	20 th Mar 2012	31 st Dec 2012	12 th Feb 2015	30 th Sep 2015
1 2	Perpetual or dated	Dated	Dated	Dated	Dated	Dated	Dated	Dated	Dated	Dated	Dated	Dated	Dated
1 3	Original maturity date	22 nd Mar 2016	22 nd Mar 2016	28 th Jun 2016	30 th Mar 2017	7 th Nov 2018	28 th Mar 2019	16 th Jun 2019	1 st Dec 2021	20 th Mar 2022	31 st Dec 2022	12 th Feb 2025	30 th Sep 2025
1 4	Issuer call subject to prior supervisory approval	No	No	No	No	No	No	No	No	No	No	No	No
1 5	Optional call date, contingent call dates and redemption amount	No	No	No	No	No	No	No	No	No	No	No	No
1 6	Subsequent call dates, if applicable	No	No	No	No	No	No	No	No	No	No	No	No

Sr No.	Particulars	SERIES 11(i) Option 2	SERIES 11(i) Option 2A	SERIES 11(ii) Option II	SERIES 15	SERIES 16	SERIES 17	SERIES 18	SERIES 19	SERIES 20	SERIES 21	SERIES 22	SERIES 23
Coupons / dividends													
17	Fixed or floating dividend/coupon	Fixed	Fixed	Fixed	Fixed	Fixed	Fixed	Fixed	Fixed	Fixed	Fixed	Fixed	Fixed
18	Coupon rate and any related index	8.75% p.a. payable annually	8.56%p.a payable semi annually	9.10% p.a. payable annually	10.10% p.a. payable annually	11.75% p.a. payable annually	9.95% p.a. payable annually	9.15% p.a. payable annually	9.73% p.a. payable annually	9.30% p.a. payable annually	9.15% p.a. payable annually	8.45% p.a. payable annually	8.5% p.a. payable annually
19	Existence of a dividend stopper	No	No	No	No	No	No	No	No	No	No	No	No
20	Fully discretionary, partially discretionary or mandatory	Partially discretionary	Partially discretionary	Partially discretionary	Partially discretionary	Partially discretionary	Partially discretionary	Partially discretionary	Partially discretionary	Partially discretionary	Partially discretionary	Partially discretionary	Partially discretionary
21	Existence of step up or other incentive to redeem	No	No	No	No	No	No	No	No	No	No	No	No
22	Noncumulative or cumulative	Non-cumulative	Non-cumulative	Non-cumulative	Non-cumulative	Non-cumulative	Non-cumulative	Non-cumulative	Non-cumulative	Non-cumulative	Non-cumulative	Non-cumulative	Non-cumulative
23	Convertible or non-convertible	Non-Convertible	Non-Convertible	Non-Convertible	Non-Convertible	Non-Convertible	Non-Convertible	Non-Convertible	Non-Convertible	Non-Convertible	Non-Convertible	Non-Convertible	Non-Convertible
24	If convertible,	NA	NA	NA	NA	NA	NA	NA	NA	NA	NA	NA	NA

Sr · N o.	Particulars	SERIES 11(i) Option 2	SERIES 11(i) Option 2A	SERIES 11(ii) Option II	SERIES 15	SERIES 16	SERIES 17	SERIES 18	SERIES 19	SERIES 20	SERIES 21	SERIES 22	SERIES 23
	conversion trigger(s)												
2 5	If convertible, fully or partially	NA	NA	NA	NA	NA	NA	NA	NA	NA	NA	NA	NA
2 6	If convertible, conversion rate	NA	NA	NA	NA	NA	NA	NA	NA	NA	NA	NA	NA
2 7	If convertible, mandatory or optional conversion	NA	NA	NA	NA	NA	NA	NA	NA	NA	NA	NA	NA
2 8	If convertible, specify instrument type convertible into	NA	NA	NA	NA	NA	NA	NA	NA	NA	NA	NA	NA
2 9	If convertible, specify issuer of instrument it converts into	NA	NA	NA	NA	NA	NA	NA	NA	NA	NA	NA	NA
3 0	Write-down feature	No	No	No	No	No	No	No	No	No	No	Yes	Yes

Sr · N o.	Particulars	SERIES 11(i) Option 2	SERIES 11(i) Option 2A	SERIES 11(ii) Option II	SERIES 15	SERIES 16	SERIES 17	SERIES 18	SERIES 19	SERIES 20	SERIES 21	SERIES 22	SERIES 23
3 1	If write-down, write-down trigger(s)	NA	NA	NA	NA	NA	NA	NA	NA	NA	NA	PONV Trigger	PONV Trigger
3 2	If write-down, full or partial	NA	NA	NA	NA	NA	NA	NA	NA	NA	NA	Fully or Partially	Fully or Partially
3 3	If write-down, permanent or temporary	NA	NA	NA	NA	NA	NA	NA	NA	NA	NA	Permanent	Permanent
3 4	If temporary write-down, description of write-up mechanism	NA	NA	NA	NA	NA	NA	NA	NA	NA	NA	NA	NA
3 5	Position in subordination hierarchy in liquidation (specify instrument type immediately senior to instrument)	Pari-passu among themselves and with other subordinated indebtedness of UTI Bank Ltd., and subordinate to the claims of all other unsecured creditors and depositors of UTI Bank Ltd., as regards repayment of principal and interest by the Issuer.							Pari-passu among themselves and subordinate to the claims of all other unsecured creditors and depositors of Axis Bank Ltd., as regards repayment of principal and interest by the Issuer.		The claims of debenture holder(s) shall be (i) senior to the claims of investors in instruments eligible for inclusion in Tier I capital of the Bank and (ii) subordinate to the claims of all depositors and general creditors of the Bank.		
3 6	Non-compliant transitioned features	Yes	Yes	Yes	Yes	Yes	Yes	Yes	Yes	Yes	Yes	No	No

Sr · No.	Particulars	SERIES 11(i) Option 2	SERIES 11(i) Option 2A	SERIES 11(ii) Option II	SERIES 15	SERIES 16	SERIES 17	SERIES 18	SERIES 19	SERIES 20	SERIES 21	SERIES 22	SERIES 23
3 7	If yes, specify non-compliant features	No Basel III Loss Absorbency	No Basel III Loss Absorbency	No Basel III Loss Absorbency	No Basel III Loss Absorbency	No Basel III Loss Absorbency	No Basel III Loss Absorbency	No Basel III Loss Absorbency	No Basel III Loss Absorbency	No Basel III Loss Absorbency	No Basel III Loss Absorbency	NA	NA

XIV. FULL TERMS & CONDITIONS OF REGULATORY CAPITAL INSTRUMENTS

The full terms and conditions of all instruments included in the regulatory capital are as below:

Sr. No.	Capital Type	Instruments	Full Terms and Conditions (Term Sheets & Offer Circular)
1	Equity	Equity	Click Here
2	Tier 1	Series 12	Click Here
3		\$ 46 million Hybrid Tier I Notes	Click Here
4	Upper Tier 2	Series 13	Click Here
5		Series 14	Click Here
6		\$ 60 million Subordinated Notes	Click Here
7		\$ 150 Million Subordinated Notes	Click Here
8	Subordinated Debts	Series - 11 (Tranch I) Option 2	Click Here
9		Series - 11 (Tranch I) Option 2A	Click Here
10		Series - 11 (Tranch II) Option II	Click Here
11		Series – 15	Click Here
12		Series – 16	Click Here
13		Series – 17	Click Here
14		Series – 18	Click Here
15		Series – 19	Click Here
16		Series – 20	Click Here
17		Series – 21	Click Here
18		Series – 22	Click Here
19		Series – 23	Click Here

XV. EQUITIES – DISCLOSURE FOR BANKING BOOK POSITIONS

The risk oversight relating to the equity portfolio is part of the overall independent risk management structure of the Bank and is subjected to the risk management processes and policies approved by the Bank.

In accordance with the RBI guidelines, investments are classified at the time of purchase as:

- Held for Trading ('HFT');
- Available for Sale ('AFS'); and
- Held to Maturity ('HTM').

Investments that are held principally for sale within a short period are classified as HFT securities. As per the RBI guidelines, HFT securities, which remain unsold for a period of 90 days are reclassified as AFS securities.

Investments that the Bank intends to hold till maturity are classified under the HTM category. Investments in the equity of subsidiaries/joint ventures are categorized as HTM in accordance with the RBI guidelines. All other investments are classified as AFS securities.

Equity investments carried under the HTM category are carried at acquisition cost. Realised gains on investments under the HTM category are recognised in the Profit and Loss Account and subsequently appropriated to Capital Reserve account (net of taxes and transfer to statutory reserves) in accordance with the RBI guidelines. Losses are recognised in the Profit and Loss Account.

The Bank does not have any equity under the Banking Book.

XVI. COMPARISON OF ACCOUNTING ASSETS AND LEVERAGE RATIO EXPOSURE MEASURE AS ON 30th SEPTEMBER 2015

Particulars	(₹ in millions)
	Amount
Total consolidated assets as per published financial statements	4,775,818
Adjustments for investments in banking, financial, insurance or commercial entities that are consolidated for accounting purpose but outside the scope of regulatory consolidation	-
Adjustments for fiduciary assets recognized on the balance sheet pursuant to the operative accounting framework but excluded from the leverage ratio exposure measure	-
Adjustments for derivative financial instruments	181,100
Adjustment for securities financing transactions (i.e. repos and similar secured lending)	26,128
Adjustment for off-balance sheet items (i.e. conversion to credit equivalent amounts of off-balance sheet exposures)	726,504
Other adjustments	(20,855)
Leverage ratio exposure	5,688,695

XVII. LEVERAGE RATIO COMMON DISCLOSURE TEMPLATE AS ON 30th SEPTEMBER 2015

(₹ in millions)

	Particulars	Leverage ratio framework
On-balance sheet exposures		
1	On-balance sheet items(excluding derivatives and SFTs, but including collateral)	4,692,086
2	(Asset amounts deducted in determining Basel III Tier 1 capital)	(20,855)
3	Total on-balance sheet exposures (excluding derivatives and SFTs)(sum of lines 1 and 2)	4,671,231
Derivative Exposures		
4	Replacement cost associated with all derivatives transactions (i.e. net of eligible cash variation margin)	51,705
5	Add-on amounts for PFE associated with all derivatives transactions	129,395
6	Gross-up for derivatives collateral provided where deducted from the balance sheet assets pursuant to the operative accounting framework	-
7	(Deductions of receivables assets for cash variation margin provided in derivatives transactions)	-
8	(Exempted CCP leg of client-cleared trade exposures)	-
9	Adjusted effective notional amount of written credit derivatives	-
10	(Adjusted effective notional offsets and add-on deductions for written credit derivatives)	-
11	Total derivative exposures (sum of lines 4 to 10)	181,100
Securities financing transaction exposures		
12	Gross SFT assets (with no recognition of netting), after adjusting for sale accounting transactions	109,860
13	(Netted amounts of cash payables and cash receivables of gross SFT assets)	-
14	CCR Exposure for SFT Assets	-
15	Agent transaction exposures	-
16	Total securities financing transaction exposures (sum of lines 12 to 15)	109,860
Other off-balance sheet exposures		
17	Off-balance sheet exposure at gross notional amount	2,045,499
18	(Adjustments for conversion to credit equivalent amounts)	(1,318,995)
19	Off-balance sheet items (sum of lines 17 and 18)	726,504
Capital and total exposures		
20	Tier 1 capital	428,791
21	Total exposures (sum of lines 3,11,16 and 19)	5,688,695
Leverage Ratio		
22	Basel III leverage ratio	7.54%